

# Beech Green Primary School

*"Believe Grow Persevere Succeed"*

## Newsletter for Thursday 23<sup>rd</sup> April 2020

### School to Home – Week 5



Welcome to Term 5 – this letter comes to you on St. George's Day

Dear Parents and Carers,

Welcome back to the start of the summer term at Beech Green Home School. We still have no indication of when we might re-open, but I am talking to the Local Authority every other day and will let you know as soon as we know.

The survey you completed last term has helped us understand more about your situation. Of course, each family is different and there are a range of requests, which teachers have responded to. If something is still not working for you, PLEASE tell us. We also have access to a range of other resources and support including:

- Mental health parent advice line 01452 894300
- Bereavement support for children and families
- Food – if your child usually has a Free School Meal (not just because they are in KS1) we can give you essentials or you are welcome to be put on the TESCO community food scheme
- The teaching partners can help provide extra support
- Printed packs of work which you can safely collect from the school car park
- Advice on Grammar school preparation and application
- Key Worker childcare facility Monday to Friday 8am to 5:30pm

There is also a Family Information Service – see details below.

Our staff have been busy this week; look out tomorrow for our film creation on [Twitter @beech\\_green](https://twitter.com/beech_green)

Thank you for your overwhelming support for the residents of Chestnut Court; what a wonderfully generous and thoughtful school community you are!

Mrs Julie Poulson - Headteacher

**All Key Worker Childcare enquiries to:** [covid19@beechgreen.gloucs.sch.uk](mailto:covid19@beechgreen.gloucs.sch.uk)



### **Donations of Toiletries for Chestnut Court**

We have been asked to let you all know that Chestnut Court now have enough donations of toiletries and do not need any more! Thank you to all of you who have been so generous.

### **The Family Information Service is there for you!**

Coming out with this newsletter is an information sheet about The Family Information Service which offer a free confidential advice line providing guidance and emotional support on any aspect of parenting and family life.

How to contact them....

Available Mon – Fri, 9am – 8pm and on Saturdays 10am – 6pm

Call free of charge on 0800 542 02 02. If they can't answer straight away please leave a message and they will call you back. Email at [familyinfo@gloucestershire.gov.uk](mailto:familyinfo@gloucestershire.gov.uk) and they should respond to you the same working day. Find them on Facebook – just search for Family Information Service – Gloucestershire and leave a message. Look them up for lots of useful hints and tips, by visiting [www.glofamiliesdirectory.org.uk](http://www.glofamiliesdirectory.org.uk).

## **Beech Green Photography Competition**

Please keep emailing those photos to [admin@beechgreen.gloucs.sch.uk](mailto:admin@beechgreen.gloucs.sch.uk)

1 entry per child and/or 1 per parent/carer – you choose your favourite and please send it in to us. Please also say if the photo is a child entry or adult section. You will need to give your photo a title and the name of the photographer, as the examples below. We are enjoying seeing what you are taking and will keep the competition rolling for now. Below we share with you...

### **Pupil's Section**

Just a few photos this week to encourage children to send in their entries. This poignant photograph of lily flowers was taken by Dylan in Y4 (really thought-provoking Dylan – well done) and also well done to Mia Manton from Cherry R who had to watch the bees buzzing around her garden for ages before she managed to get an action shot of the bee flying off!

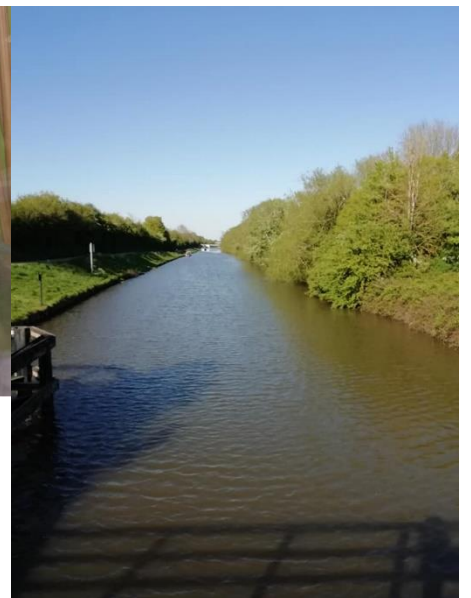
'Lilies in my Garden' by Dylan Harris Y4      Mia in Reception has given her photo the name - 'Busy bee'



This is the first butterfly in our garden for 2020. So beautiful and perfect. Anna Tuffin in Y6 has called her butterfly and photo 'Petal'; she hopes to see Petal every day in her garden during lock down.

If you have sent in a photo and it's not shown here; don't worry we will share some more with you in next week's newsletter. We really like seeing them – thank you.

### **Adult Section**



'Stay Home – Save Lives - Protect the NHS' by Mrs Howe

'Our Walk' by Mrs Freeman

'From 30 to 1' by Miss Grainger

## League Table of TT Rockstars

Wow! Well done to all of you dedicated Rockers who continued playing TT Rockstars throughout the Easter holiday; this week's league table includes all of those points. Special mention should go to Birch 2 who have stormed up the leader board with over 10,000 points - awesome effort! Dogwood 4 are still the Headline Act though - will someone else be in the spotlight next week?...

Position	Class	Points
1	Dogwood 4	20,272
2	Frisii 5	16,036
3	Hornbeam 4	13,152
4	Acacia 6	12,548
5	Whitebeam 5	11,118
6	Birch 2	10,800
7	Rowan 3	7,894
8	Hawthorn 3	6,507
9	Willow 2	4,418
10	Sycamore 6	4,330
11	Maple 1	3,250
12	Elder 1	2,481

## Finally,

A word this week from our dear Tally school dog...

[https://twitter.com/BeechgreenTally?ref\\_src=twsrc%5Etfw%7Ctwcamp%5Eembeddedtimeline%7Ctwterm%5Eprofile%3Abeech\\_green&ref\\_url=https%3A%2F%2Fwww.beechgreenprimary.co.uk%2Fdefault.aspx](https://twitter.com/BeechgreenTally?ref_src=twsrc%5Etfw%7Ctwcamp%5Eembeddedtimeline%7Ctwterm%5Eprofile%3Abeech_green&ref_url=https%3A%2F%2Fwww.beechgreenprimary.co.uk%2Fdefault.aspx)

Continued thanks to everyone for doing your bit, whatever that might be.  
Take care, stay safe and good health.

Contact school - [admin@beechgreen.gloucs.sch.uk](mailto:admin@beechgreen.gloucs.sch.uk)

Website – [www.beechgreenprimary.co.uk](http://www.beechgreenprimary.co.uk)

**STAY HOME → PROTECT THE NHS → SAVE LIVES**