

# Beech Green Primary School

*“Believe Grow Persevere Succeed”*

## Newsletter for Thursday 21<sup>st</sup> May 2020

### School to Home – Week 9



Dear Parents and Carers,

I am aware that families with children in Reception, Year 1 and Year 6 will be thinking about a possible return to school on June 1st. Thank you for your patience; we have been working hard to plan and prepare so that we are ready if the government decide to go ahead on 28th May. We want to welcome children back to Beech Green safely. We know that school is the best place for children to learn, and that it is good for children’s mental wellbeing to have social interactions with others. We also know that it will be a different school experience.

Today I have contacted all those families, with children in Rec, Year 1 and Year, via Parent Mail and asked them to make some difficult decisions. The information sent out to them is based on what we currently know and the most recent guidance. In order to comply, we are offering part time sessions (3 hours) a morning or afternoon, five days a week. We believe that this approach will give some structure to the days and it means that children can be in their year group area with teachers they know. It also means we can continue to offer key worker childcare and places for children with an EHCP; it is not ideal and will not suit everyone, but we have tried to put the needs of our children first.

As you can imagine this has dominated our thoughts and actions this week, the survey you completed has really helped to shape our views. Whilst we are all concerned with safety, specifically trying to make sure young children maintain social distancing, it was heartening to see that like us, so many of you would like a return to be about social interactions as well as academic support.

There will be a few other changes which we hope will improve the work we provide for home learning after half term. We will once again ask you to get in contact with us, so that we know the people in our community are safe and well.

Throughout this, we have been overwhelmed by the support from you, the appreciation you have shown staff just with a simple, ‘thank you’ email has made a vast difference. There are some difficult decisions and a lot of shared responsibility ahead. Please keep talking to us; we are here to answer questions or offer help.

Have a lovely half term week, hopefully in the sunshine!

Mrs Julie Poulson - Headteacher

Follow us on [@beecheducation](https://twitter.com/beecheducation)



**All Key Worker Childcare enquiries to:** [covid19@beechgreen.gloucs.sch.uk](mailto:covid19@beechgreen.gloucs.sch.uk)

### **TT Rockstars**

Wow! We have all been very impressed by your TT Rockstars efforts during your time at home. Many of you have vastly improved your speed & accuracy, pushed yourselves to master new tables and even beaten some of your teachers! Times table fluency is such a vital maths skill to possess and will come in very handy in all areas of life; at Beech Green & far beyond! Keep on rocking, even when we return to school... we’ll still be checking!

## **Beech Green Photography Competition**

We've had some more stunning photos sent to us this week – thank you; we so enjoy seeing them. Here are some thought provoking photos taken by the Judges family.



'There is still hope' by Charlie Judges – Dogwood 4



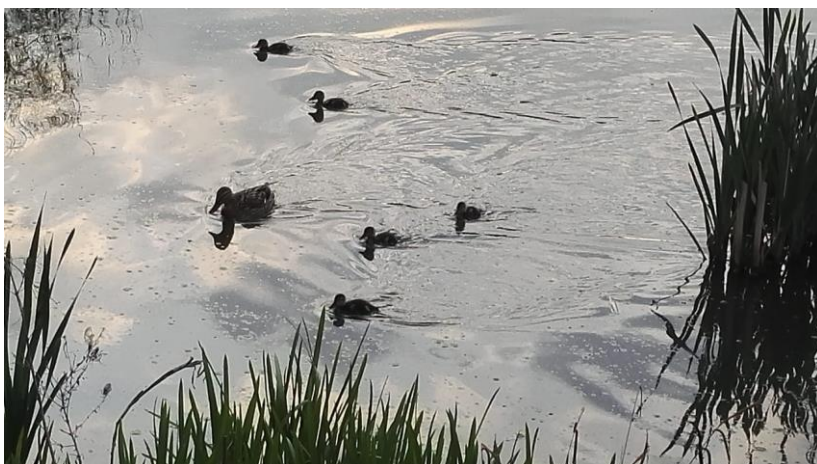
'Bright like the sunshine' by Tilly Judges - Birch 2



'Take flight' by Rik Judges (adult)



'Social distancing' by Katie Judges (adult)



Thank you to Mrs Thorne who sent this sweet picture of local ducklings...  
"Five Little Ducks Went Swimming One Day"

You are welcome to send your entries to Mrs Simmonds at [admin@beechgreen.gloucs.sch.uk](mailto:admin@beechgreen.gloucs.sch.uk)  
Please say if the photo is a child entry or adult section. You will need to please give your photo a title and the full name of the photographer.



## **Virtual Sports Day on Tuesday 26<sup>th</sup> May**

On Monday, Mrs Gittings ParentMailed everyone about the virtual schools' sports day taking place on **Tuesday**. If you feel like taking part then have fun; if you don't then that's fine too. No pressure either way; we are just reminding you in case it sounds like something your children might enjoy.

It takes place on Tuesday 26 May 2020 – and it is an event planned by Gloucestershire County Council for all children and young people.

They suggest children might like to participate in an activity that encourages them to have fun, participate and keep active. They will also be able to encourage their friends and families to donate to the Just Giving page they have set up for our Gloucestershire Virtual Sports Day at:

<https://www.justgiving.com/fundraising/gloucestershire-county-council>

Every child and young person will have different abilities so they would like all to set a challenge which is suitable for them, whether it is 10 minutes or two hours. It is the taking part that counts.

- Do an activity in your garden or home!
- It can be as silly or as sporty as you like!

Please take some time to discuss this with the child or young person before the event – something fun to look forward to!

## **Finally,**

We do wonder how you are feeling! We actually probably all feel much the same, as we come to the end of our ninth week out of normal school life. The staff here all miss you and your children, which make up the vibrance and soul of our school. It's why we love working there.

One thing is for sure, all the staff at Beech Green share the common goal of doing their best for your children, so no matter how different things seem right now, feel reassured that we are a resilient, caring, creative and compassionate staff, who will do our very best to make things feel safe and welcoming for your children, when we next get to see them. We all feel it – please don't think it's just you on your own!

We continue to thank each and every one of you who is doing whatever it is you can do, to support your family, each other and our wider community.

We hear, the next challenge for the nation is picking all the harvest – there's a thought! We truly are a land army and plough on to get to brighter days.

Take care, stay safe, good health and try to have a Happy Bank Holiday weekend.

Contact school - [admin@beechgreen.gloucs.sch.uk](mailto:admin@beechgreen.gloucs.sch.uk)  
Website – [www.beechgreenprimary.co.uk](http://www.beechgreenprimary.co.uk)

**STAY ALERT → CONTROL THE VIRUS → SAVE LIVES**